

FAUX SKIRT FRILL APRON

Accessory of the Month May 2018

Overlocker Gathering Attachment



FAUX SKIRT FRILL APRON

Accessory of the Month May 2018

Overlocker Gathering Attachment



Drafting the apron pattern:

1. Using the diagram as a guide, draft up the apron pattern. | Figure A
2. Draw a rectangle on a sheet of paper 50cm wide x 40cm high.
3. Place a mark 10cm down from the top left corner. Label (A).
4. Place a mark 5cm up from the bottom right corner. Label (B).
5. Draw a straight line from A to B and place a mark half way. Label (C).
6. Draw a perpendicular line from point C and measure down 7cm. Label (D).
7. Draw a curve between A & B going through D.
8. Mark the Top and Hem edges.
9. Place a few check marks along the curve. (This will make it easier to match up later).
10. Cut around the outside of the square and along the curved line, these are your two pattern pieces.

Cutting

On the wrong side of the fabric, trace the pattern pieces with tailors chalk or pencil, marking the top, hem & check marks along the curve. | Figure B

Main Fabric:

- Cut: (1) - Top piece
(1) - Hem piece
(1) - 7cm x 50cm for the waistband

Accent Fabric:

- Cut: (2) - 7cm x 120cm strips for the ruffles
(2) - 3.5cm x 120cm strips for the ties

Requirements

- Janome ML644D overlocker or similar
 - Gathering Attachment
 - 60cm x 50cm piece of paper
 - Ruler, pencil & tailors chalk
 - 60cm main fabric (Drill, Denim or similar)
 - 30cm coordinating fabric (Quilting cotton or similar)
 - 4 spools of overlocking thread
 - Janome Sewing machine
 - Thread for topstitching & bobbin
- Optional:
- Janome Embroidery Machine
 - Embroidery & bobbin threads
 - Tear away stabiliser

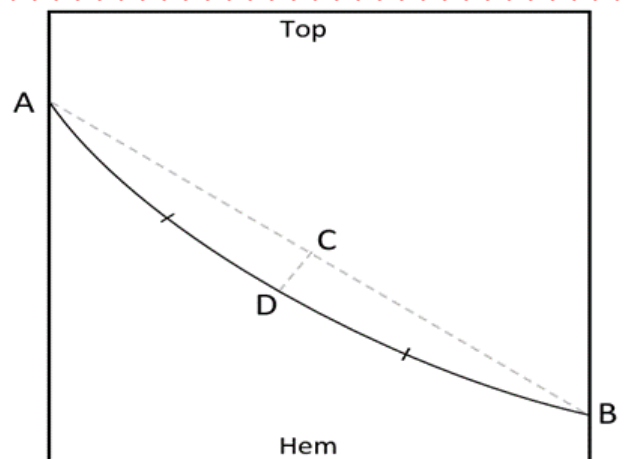


Figure A

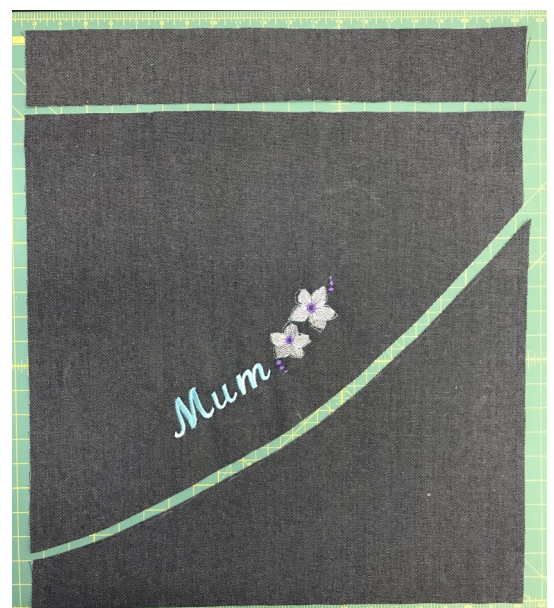


Figure B

FAUX SKIRT FRILL APRON

Accessory of the Month May 2018

Overlocker Gathering Attachment

Sewing Instructions

1. Using 4 threads, overlock the sides of both the Top and Hem apron pieces. Settings for the overlocker: | Figure C

Needles: Both
Stitch Length: 2.5
Differential Feed: 1

2. Press the sides under 1 cm and using a sewing machine, top stitch the seam allowances down.

3. Overlock the top edge of the waistband.

4. Remove the left needle & thread and change the settings to Rolled Hemming. (See your instruction book for exact settings.) Hem one long edge on the ruffles and both long edges on the ties. | Figure D

Needles: Right only
Stitch Length: R
Differential Feed: 1

(Note: If you are confident with rolled hemming you may choose to deactivate the blade on the overlocker.)

5. On both ties, fold one short end under 1 cm and press, fold it again another 1 cm and press to make a double turned seam and topstitch using the sewing machine.

6. Attach the Gathering Attachment to the overlocker following the instructions in the packaging, change the settings:

Needles: Right Only
Stitch Length: 4
Differential Feed: 2

7. Feed a ruffle piece, right side up, under the arm of the attachment, stitch approx. 2cm. Feed the top apron panel, piece on the curved edge right side down, on top of the attachment arm and under the foot. Continue sewing along the length of the apron making sure the edges align as you stitch. Make sure the ruffle finishes at least 2cm longer than the apron panel. | Figure E

8. Attach the second ruffle piece to the straight edge of the Hem piece leaving a 1" tail of stitches.

9. Trim the ends of the ruffles 2cm longer than the apron. Press under a double turned seam on both ends of each strip and topstitch using the sewing machine.

10. To join the Top and Hem panels together, insert the left needle and thread, swing the gathering attachment arm out of the way and change the settings:

Needles: Both
Stitch Length: 2.5
Differential Feed: 1

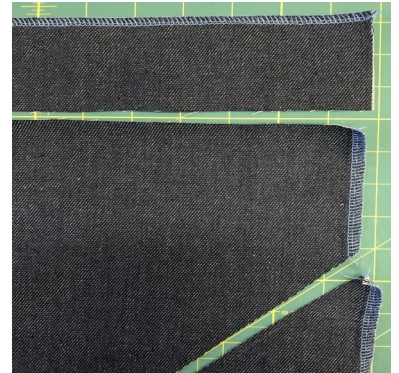


Figure C

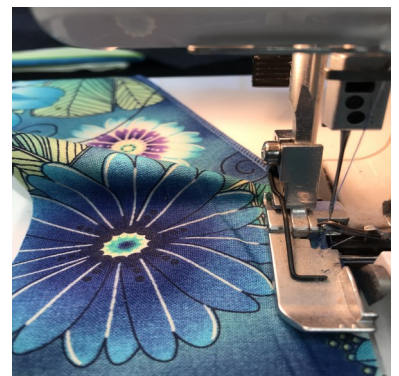


Figure D



Figure E



Figure F

FAUX SKIRT FRILL APRON

Accessory of the Month May 2018

Overlocker Gathering Attachment

Sewing Instructions continued

11. With right sides together, with the ruffle sandwiched in the middle, matching the ends of the apron panels and check points along the curve. Overlock the Top and Hem piece along the curve leaving a 1" tail of stitches at either end. | Figure G

13. Press the seam allowance up, tucking the tails of the overlocking thread under the seam allowance and using a sewing machine, topstitch along the seam. | Figure H

14. Complete the same process for the bottom hem ruffle. Press the seam allowance up, tuck the tails of the overlocking thread under the seam allowance and topstitch along the seam using the sewing machine. | Figure I

To attach the waistband, change the settings:

Needles: Both

Stitch Length: 2.5

Differential Feed: 2

15. With right side down feed the waistband (the long side that is not overlocked) on top of the gathering attachment arm, under the foot and sew approx. 2cm. Slide the top edge of the apron right side facing up under the attachment arm and continue sewing until the end of the apron.

16. Cut the ends of the waistband so they are 1.5cm longer than the apron and press towards the centre. Press the apron seam allowance up towards the waistband and press the waistband over so it's finished width is 2.5cm. (The overlocking of the waistband will sit just below the seam to the apron.) | Figure J

17. Insert one short end of the tie pieces into each side of the waistband, making a little tuck in the tie and pin into place. Using a sewing machine, topstitch both ends of the waistband. | Figure K

18. Continue stitching in the ditch along the waistband/apron seam.

19. Embellish with embroidery or decorative stitches if desired.



Embroidery



Decorative Stitch

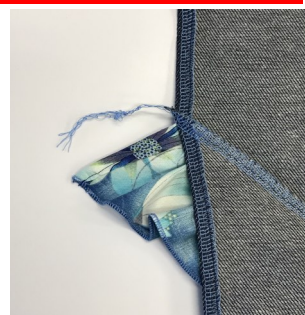


Figure G



Figure H



Figure I



Figure J



Figure K