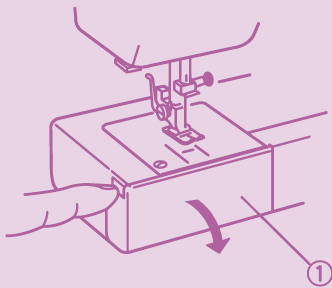


# HOW TO THREAD

## FRONT LOADING BOBBIN

1

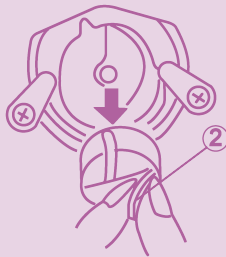


Remove the extension table from the machine by pulling it to the left. Open the shuttle cover ① by pulling down the embossed part on the left of the cover.

Raise the needle to its highest position by rotating the handwheel toward you.

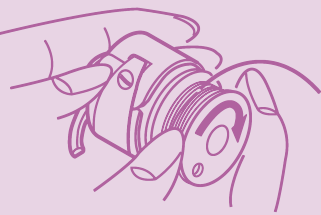
- ① Shuttle cover
- ② Bobbin case

2



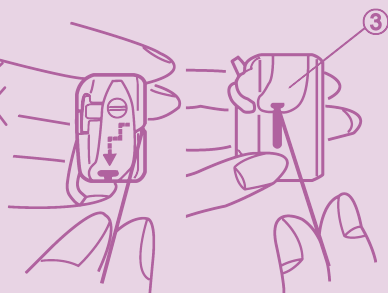
Pull open the latch of the bobbin case, and then pull the bobbin case ② straight out of the shuttle.

3



Place a bobbin in the bobbin case, making sure the thread feeds clockwise from the bobbin.

4



Draw about 4" (10cm) of thread through the slot of the case to the opening under the tension spring.

- ③ Tension spring

5



Holding the latch open, position the bobbin case into the shuttle, and then release the latch. The case should lock into the place when the latch is released.

